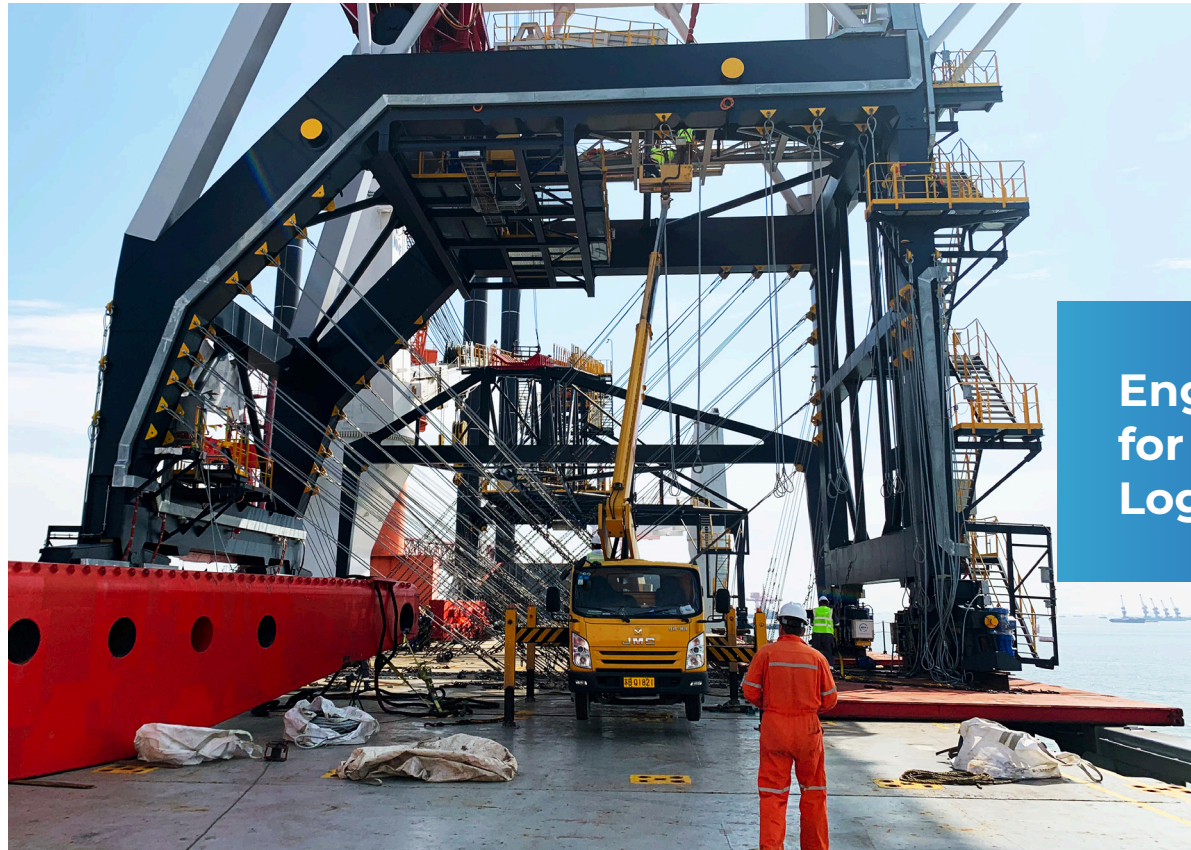


Maritec International stands at the forefront of delivering cutting-edge engineering solutions, thoughtfully crafted to address the distinct needs of our clients, regardless of whether their projects are modest or intricate in nature.

Leveraging our extensive expertise in maritime heavy lifting, project logistics, land transportation, and sophisticated software solutions, we offer customized services specifically designed to meet your unique demands.

Our commitment lies in utilizing the latest technologies, maintaining professional excellence, and promoting collaboration throughout every phase to ensure the highest levels of efficiency, safety, and reliability.



## Engineering Solutions for Maritime & Logistics Excellence



**Web :**  
maritec.rs

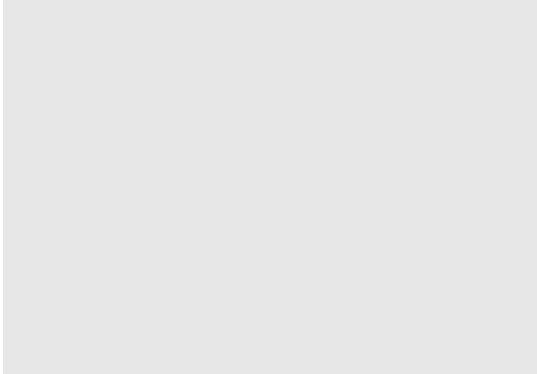
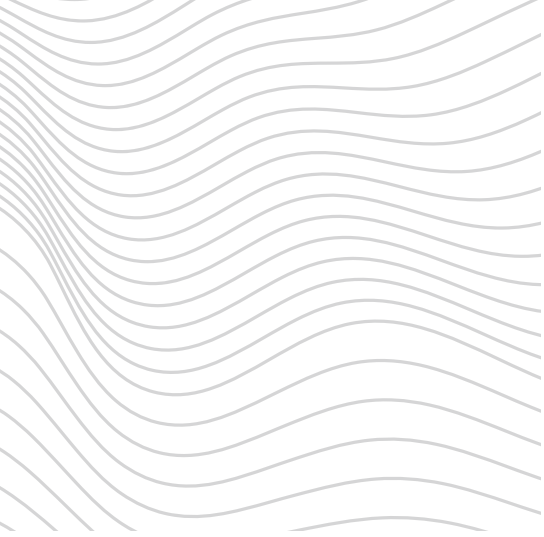


**E-Mail :**  
info@maritec.rs



**Address :**  
Reg no.22157191  
Belfortska 22-3 11070  
Novi Belgrade, Serbia

Maritec provides professional engineering solutions for the maritime sector — from minor upgrades to large-scale projects. Our key advantage is an in-house team of certified engineers. We deliver full-cycle technical support and services in strict compliance with international standards (SOLAS, MARPOL, Class requirements).



# Port Captain Services

At Maritec, we provide Port Captain services on a global scale, maintaining the highest standards of excellence. Our skilled Port Captains are experienced professionals who supervise and manage port operations, ensuring smooth coordination and execution of maritime activities.

## 01. Worldwide Availability

Our Port Captains can take on assignments anywhere in the world, delivering local knowledge and assistance regardless of your operational locations. We guarantee that our representatives are well acquainted with international regulations and standards, allowing them to address any port-related scenario with expertise.

## 02. Thorough Oversight

From the loading and unloading of cargo to safety inspections and compliance assessments, our Port Captains diligently oversee every facet of port operations. They collaborate with port authorities, shipping lines, and other parties involved to ensure that operations are conducted efficiently and without interruption.

## 03. Specialized Knowledge in Heavy and Oversized Cargo

Focusing on the management of heavy lift and oversized cargo, our Port Captains possess vast experience in handling intricate and large-scale operations. They make certain that all procedures are strictly followed to avoid delays and maintain cargo integrity.

## 04. Reporting

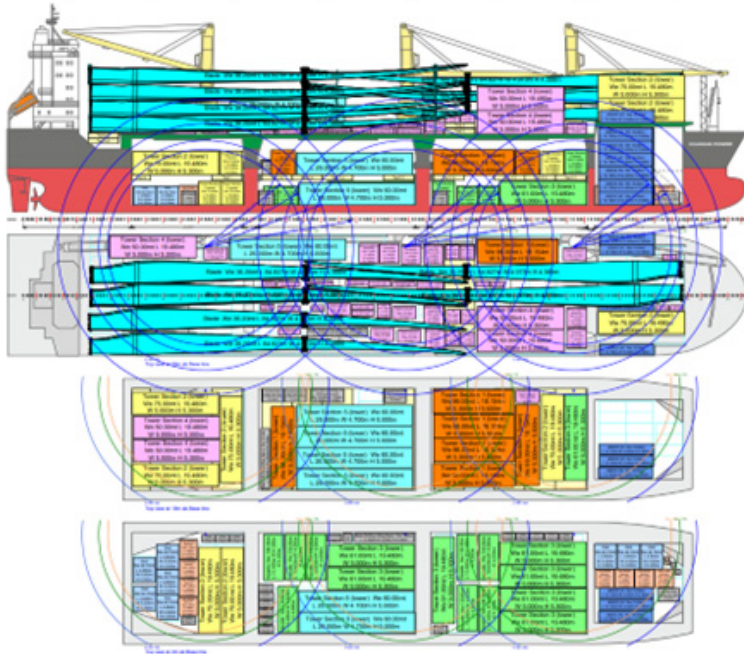
We emphasize clear and timely communication with our clients. Regular updates provided to clients through a standardized report format to keep you informed of progress. Emergency Notifications while immediate alerts regarding any urgent issues, ensuring swift action and resolution. Detailed documentation created upon the completion of loading, outlining all relevant activities and observations.

Our dedication to comprehensive and transparent reporting guarantees that you are always informed and confident about your project's progress.



## Cargo Stowage Solutions

Maritec provides a wide range of cargo stowage solutions across various sectors, including Wind, Offshore, General, Heavy-Lift, and Oil & Gas cargoes. By leveraging AutoCAD and LoadPlanner, we develop detailed and accurate stowage plans that maximize space and guarantee the safe transport of your cargo. Our expertise ensures that each plan adheres to the highest standards of efficiency and compliance, tailored specifically to meet the needs of your industry.



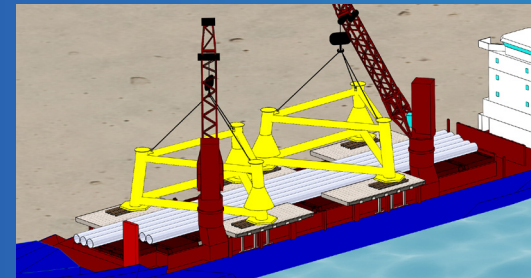
## Cargo Planning Solutions

Our Cargo Planning Solutions include an extensive array of essential documentation and simulations, meticulously crafted using AutoCAD and LoadPlanner.

- Lashing plans and calculations
- Lifting and rigging plans
- Bedding plans
- Operation Manuals

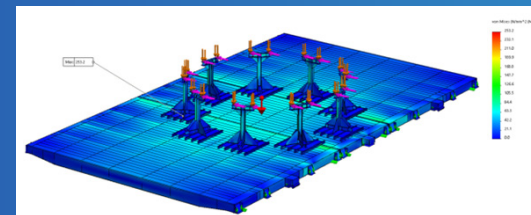
## Engineering

Providing comprehensive engineering solutions for the maritime industry. Expertise in heavy lifting, project management, and cutting-edge technology. Committed to your efficiency, safety, and reliability.



## 3D modeling and simulation capabilities

Each plan is designed to enhance safety and efficiency, customized to the specific requirements of your project.



- Simulation Plans
- FEM/FEA analysis
- Motion analysis

# Survey

Maritec offers a wide array of marine survey services, providing thorough evaluation and reporting for various maritime requirements. Our skilled team employs advanced techniques to deliver accurate and dependable assessments for the following services.

Each survey is executed with precision and meticulous attention to detail, ensuring you receive accurate and actionable insights to support your maritime operations.

## Port Survey

Our port surveys provide comprehensive assessments of port facilities and operations. We analyze the port conditions, operational practices, and safety measures to ensure compliance with industry standards and optimize port performance.

## Damage Survey

In the event of damage, we carry out thorough damage surveys to evaluate the extent and cause of the damage. Our reports provide crucial information for claims and remediation, aiding you in effectively managing and resolving damage-related issues.

## Draft Survey

We perform detailed draft surveys to accurately measure and validate cargo quantities and vessel stability. Our precise measurements help ensure adherence to regulatory standards and enhance cargo management.



## Cargo Condition Survey

Our cargo condition surveys evaluate the state of the cargo before, during, and after transportation. We inspect and document any damage or discrepancies to protect against potential claims and maintain the integrity of your goods.

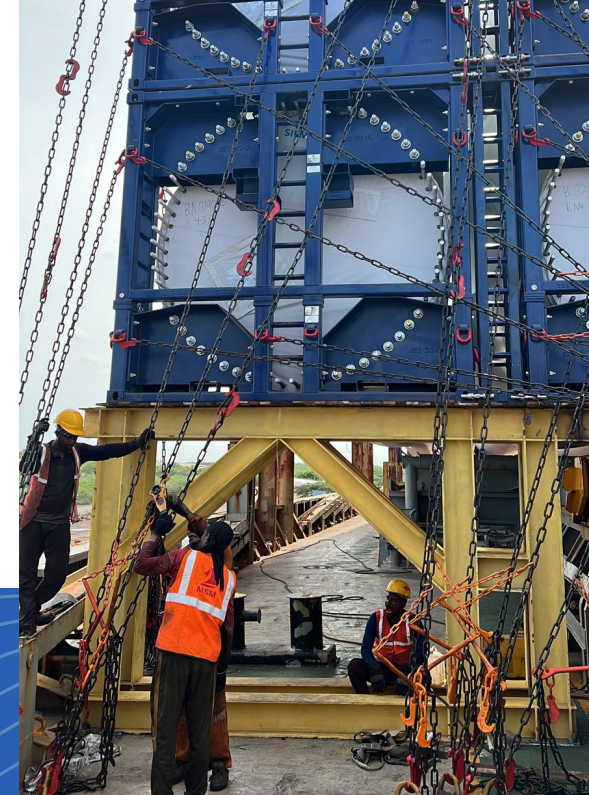
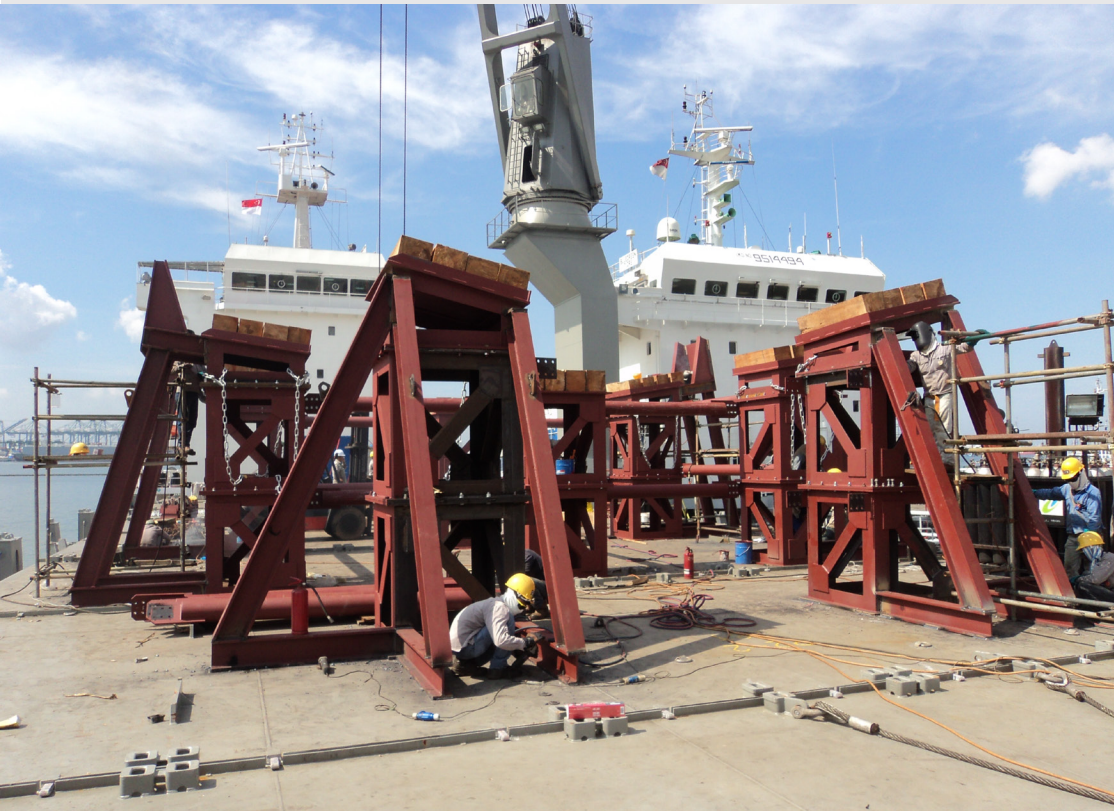
## Loadout and Offload Survey

We conduct in-depth evaluations during the loadout and offload stages to monitor and record cargo handling procedures. Our surveys ensure that loading and unloading operations are completed safely and efficiently.



# Flying Group

Our dedicated "Flying Group" is a highly skilled team comprised of experienced welders and certified crane operators. This specialized group is ready to be deployed swiftly to address your urgent logistical challenges and time-sensitive projects.



The expertise within our Rapid Response Unit covers a range of critical cargo-related tasks, including:

**Crane Operations:** Our certified crane operators are adept at managing heavy loads and specialized offshore cargo, ensuring safe and efficient handling.

**Welding Services:** Our proficient welders are equipped to handle all necessary welding requirements, particularly for demanding applications involving heavy, wind, and offshore cargo where precision and expertise are paramount.

**Cargo Securing:** We provide a team of experienced lashers who can either support your existing crew or undertake the complete securing of cargo on board vessels.